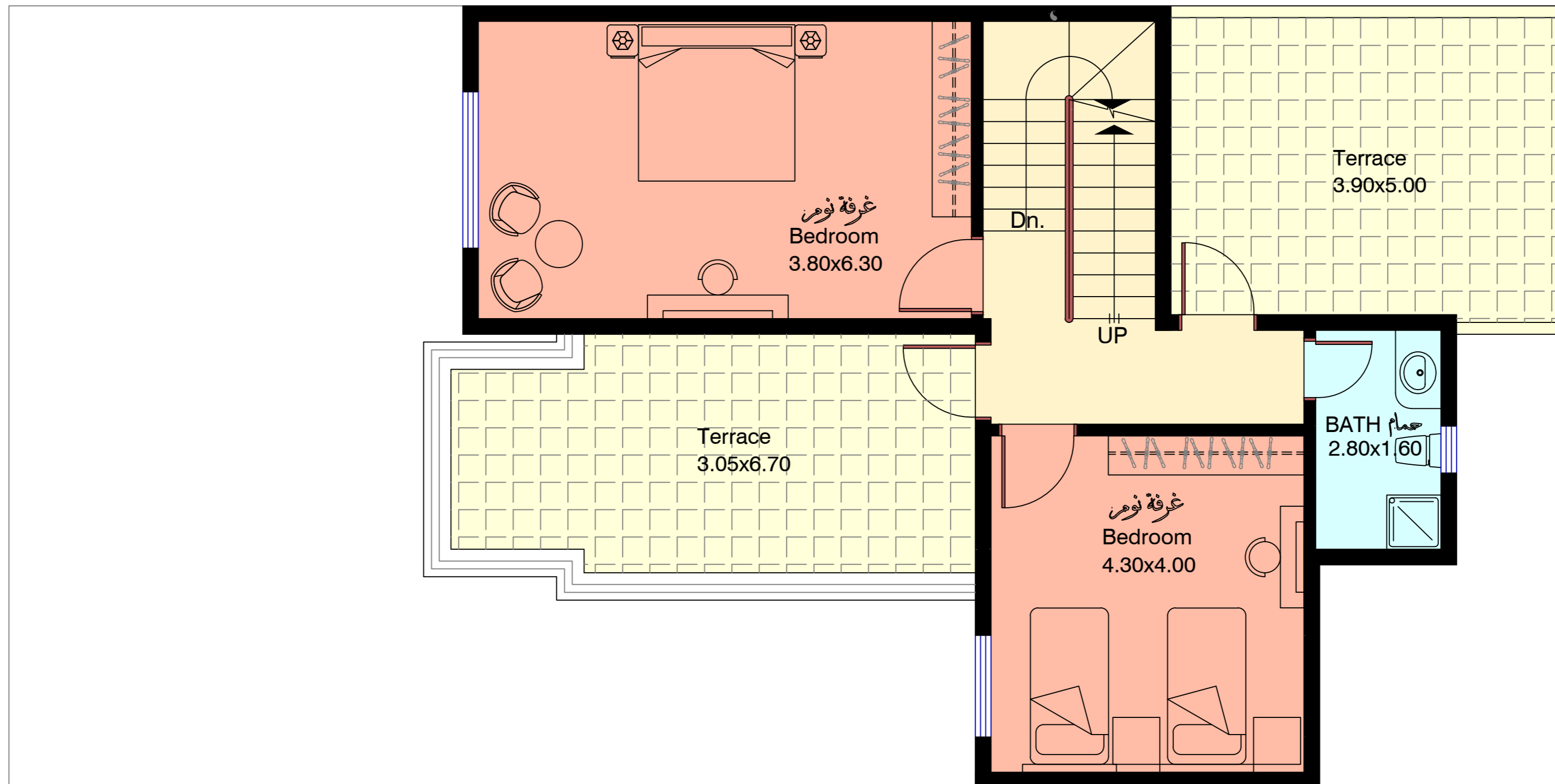


مخطط الطابق الارضي
 GROUND FLOOR PLAN
 Area = 107.4 SQ.M.

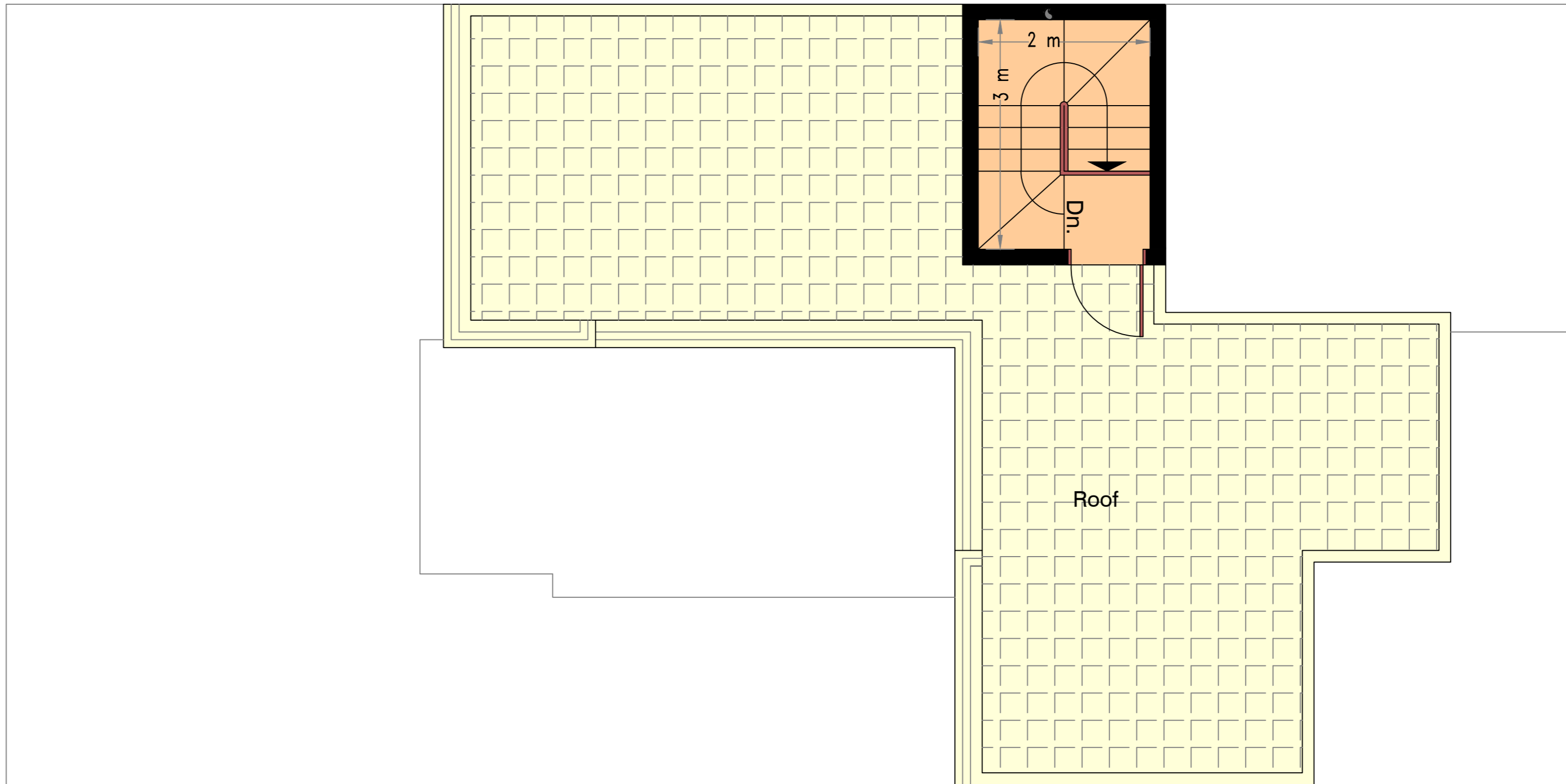
3 BEDROOM VILLA (G + 1)

Total Built up Area = 187.7 SQ.M.



مخطط الطابق الاول
 FIRST FLOOR PLAN
 Area = 69.6 SQ.M.

3 BEDROOM VILLA (G + 1)
 Total Built up Area = 187.7 SQ.M.



ROOF PLAN

Area = 10.7 SQ.M.

3 BEDROOM VILLA (G + 1)

Total Built up Area = 187.7 SQ.M.